

## Operation Introduction

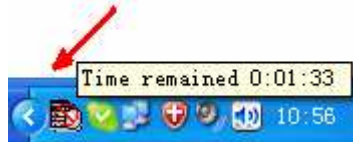
1. Execute CoinBox.exe to install application. The customer that installs CoinBox.exe has to belong to the administrators group.
2. After installation it will add CoinBox shortcut icon on desktop and "Startup" menu, as following picture:



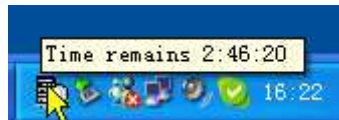
3. Double click CoinBox icon to startup application program of "Coin box manager", in system salver it shows the icon of application program "Coin box manager", as following picture:



When it's with USB Com. port but disconnect to Device, it will display as following.



4. When mouse pointer on the icon in system tray, it will display remain time, as following picture:



Click icons in tray to display menu, click "About" to display windows, as following picture:

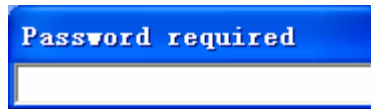


Click icons in tray to display menu, click "Absent" to display windows, as following picture:



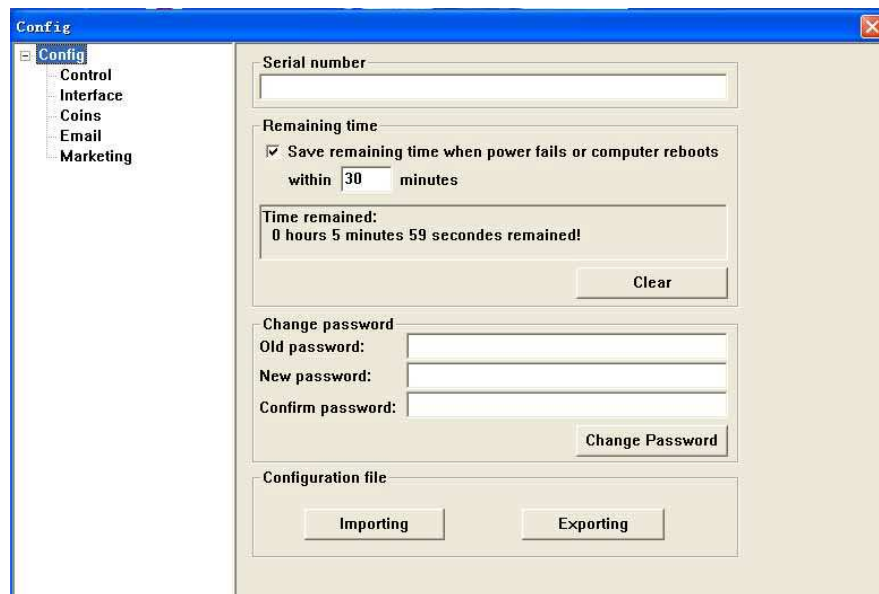
User can leave for a while after successfully setup password; and PC will continue to service after password is input correctly.

5. Click "Coin box manager" icon in system tray, input password to enter into configuration window (as default password of program is empty, just directly press "ENTER" to go into the window), password has to be inputted in 10 seconds, otherwise the "password required" window will close automatically after 10 seconds. as following picture:



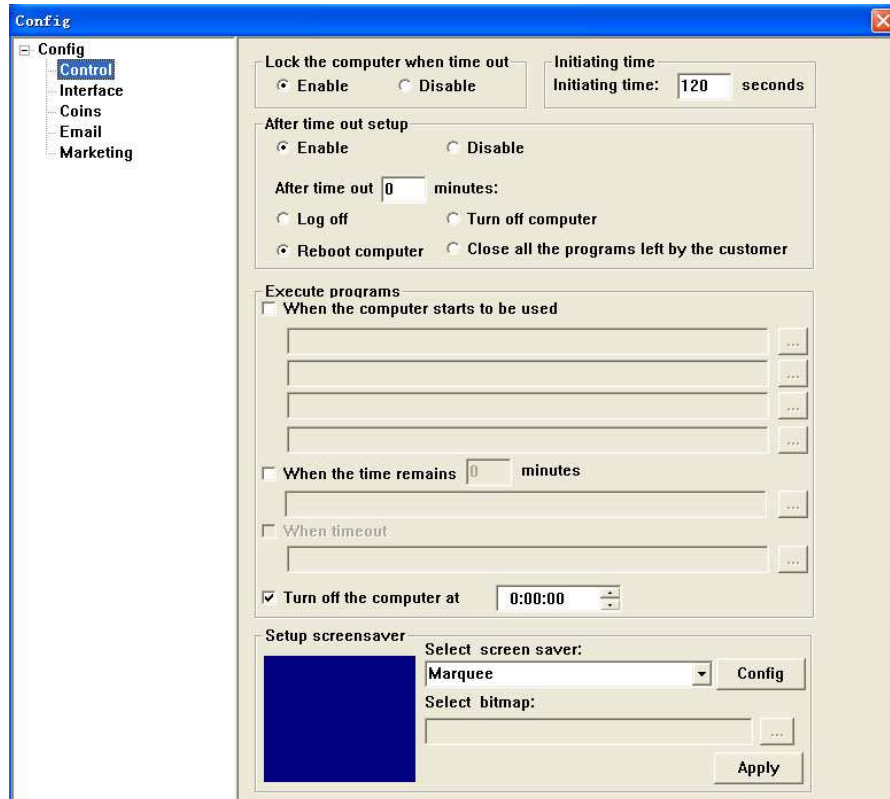
◆ **About the "Config" settings panel, as shown below:**

- \* It has the function of selecting the "remaining time".
- \* The functions of "Importing" and "exporting", it provides the same settings file can be easily set up a different computer.



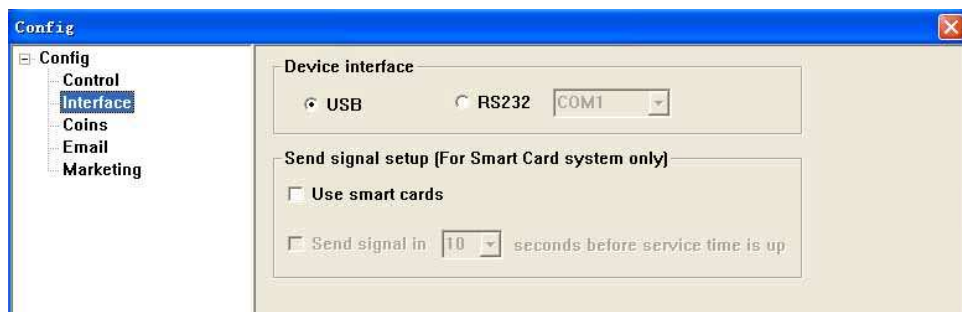
◆ About the "Control" settings panel, as shown below:

- \* When "Lock the computer when time out" selects option "Disable", it won't execute screen savers to lock computer when remains time is 0.
- \* Application programs and Website both can be available in "Execute programs".



◆ About the "Interface" settings panel, as shown below:

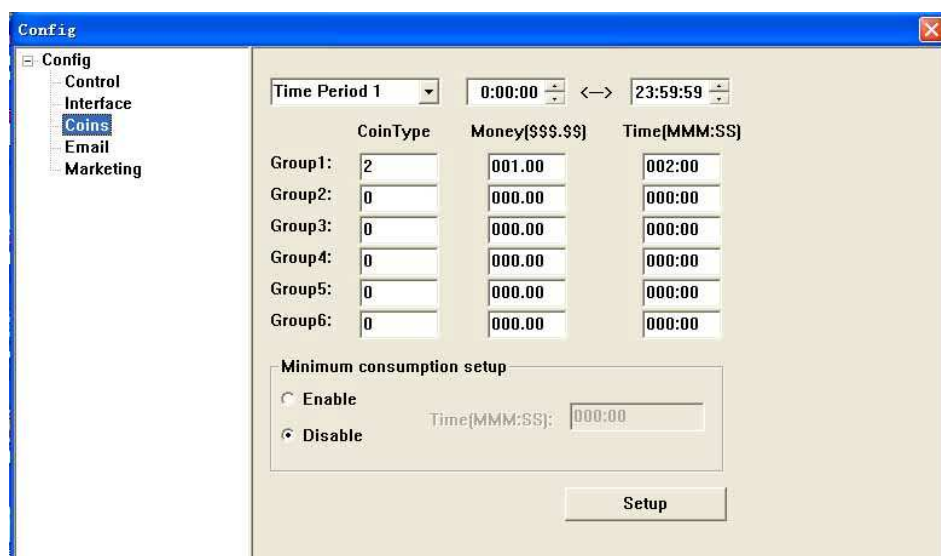
- \* When you choose to use Smart Card system, it can set the send timing.



◆ About the "Coins" settings panel, as shown below:

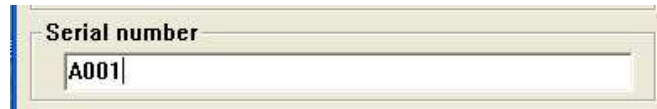
\* It allows setting coin inserting property in time periods. It can be 3 time periods at most. If the initial time and terminal time of one period are same, it would ignore the setting for this period. The total time of 3 periods must be 24 hours (count to second), otherwise when you click "Setup" button it would prompt window as below, and setting fails.

\* Settings feature offers the minimum consumption.

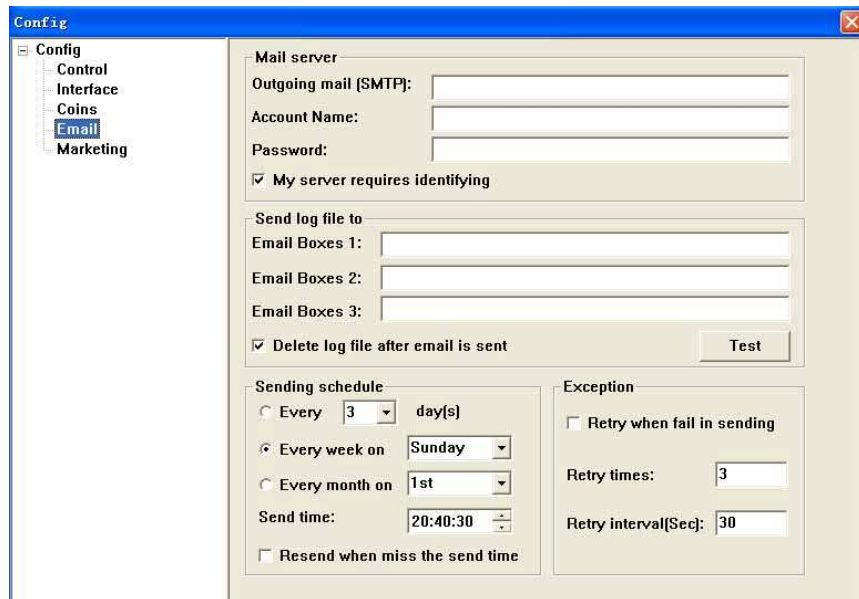


◆About the "Email" settings panel, as shown below:

- \* Setting a different serial number on different computers will produce different report file name, e-mail, and sends the specified mailbox.



A close-up of a text input field labeled "Serial number". The field contains the text "A001".

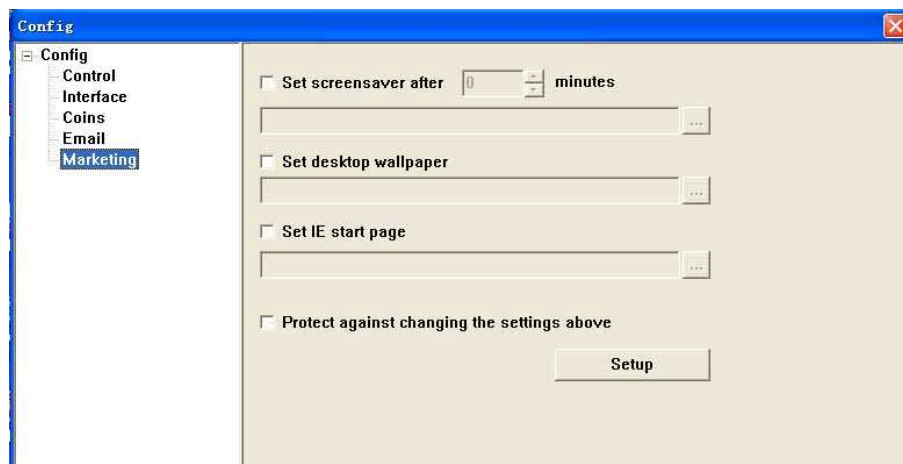


The "Config" window shows the "Email" settings panel. The left sidebar lists "Config", "Control", "Interface", "Coins", "Email", and "Marketing", with "Email" selected. The main area contains the following settings:

- Mail server**
  - Outgoing mail (SMTP): [ ]
  - Account Name: [ ]
  - Password: [ ]
  - My server requires identifying
- Send log file to**
  - Email Boxes 1: [ ]
  - Email Boxes 2: [ ]
  - Email Boxes 3: [ ]
  - Delete log file after email is sent
  - Test [ ]
- Sending schedule**
  - Every 3 day[s]
  - Every week on Sunday
  - Every month on 1st
  - Send time: 20:40:30
  - Resend when miss the send time
- Exception**
  - Retry when fail in sending
  - Retry times: 3
  - Retry interval[Sec]: 30

◆About the "Marketing" settings panel, as shown below:

- \* Provide marketing functions.



The "Config" window shows the "Marketing" settings panel. The left sidebar lists "Config", "Control", "Interface", "Coins", "Email", and "Marketing", with "Marketing" selected. The main area contains the following settings:

- Set screensaver after [0] minutes
- Set desktop wallpaper
- Set IE start page
- Protect against changing the settings above
- Setup [ ]

- The remaining time is counting back, this window could be removed, set or deleted as user needs.. It's shown as below:



- When remains time is less than 60 seconds, "Coin box manager" it will prompt with "DI~" tone, when there are coins dropped correctly "Coin box manager" will give this tone either.
- User can get depositing coins' statistic/detailed file in Installation program file (such as C:\Program Files\CoinBox\ CoinsRecord.ini). You can delete this file but don't change it, so as to avoid any statistic error. File form/content is as below:

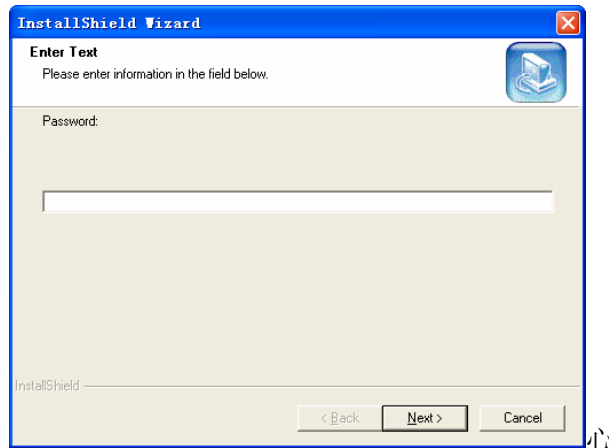
```

This file is auto generated by CoinBox. Do not edit (can be deleted) this file!
*****
*                2006/05/10(05:56:24)  ~~  2006/05/10(09:06:35)                *
*          TYPE      MONEY($$$.$$)      TIME(HH:MM:SS)      NUMBER          *
*            3         9.00              0:09:00             3                *
*            4         8.00              0:08:00             2                *
*            5        10.00              0:10:00             2                *
*            1         1.00              0:01:00             1                *
*            2         2.00              0:02:00             1                *
*          Total      30.00              0:30:00             9                *
*****

```

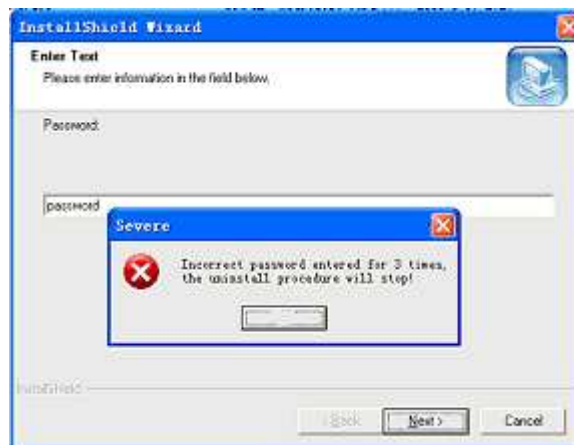
DATE	TYPE	MONEY(\$\$\$.\$\$)	TIME(MMM:SS)	NUMBER
# 2006/05/10(05:56:24)	3	3.00	3:0	1
# 2006/05/10(09:05:45)	3	3.00	3:0	1
# 2006/05/10(09:05:45)	4	4.00	4:0	1
# 2006/05/10(09:05:45)	5	5.00	5:0	1
# 2006/05/10(09:06:35)	1	1.00	1:0	1
# 2006/05/10(09:06:35)	2	2.00	2:0	1
# 2006/05/10(09:06:35)	3	3.00	3:0	1
# 2006/05/10(09:06:35)	4	4.00	4:0	1
# 2006/05/10(09:06:35)	5	5.00	5:0	1

- When remains time is 0 it locks computer until receives coins deposited correctly.
- If need to uninstall the program, just execute CoinBox.exe and then restart up computer. User who already uninstalled CoinBox should belong to administrators group. It need input correct password for uninstall. Display is as below:



It allows uninstall CoinBox after inputted correct password only, if input wrong password more than 3 times, it will prompt as below

:



Uninstall program ends with work, and exits directly.

**(End)**

### ★Remarks

#### About receive or send log file:

- (1) Our program (CoinBox) also can't normally receive or send emails to mailboxes that are unable to work on OUTLOOK, Maybe those mailboxes just support receiving or sending emails directly via internet web but don't support SMTP/POP3 protocol. It's unable to resolve this problem at present, so please make sure the mailbox that receives and sends emails should be work normally on OUTLOOK.
- (2) When there is Anti-virus software or Web-filter software in computer, sometimes these software will forbid sending emails, so it need to cancel or modify the email inspection or related setting of these software .